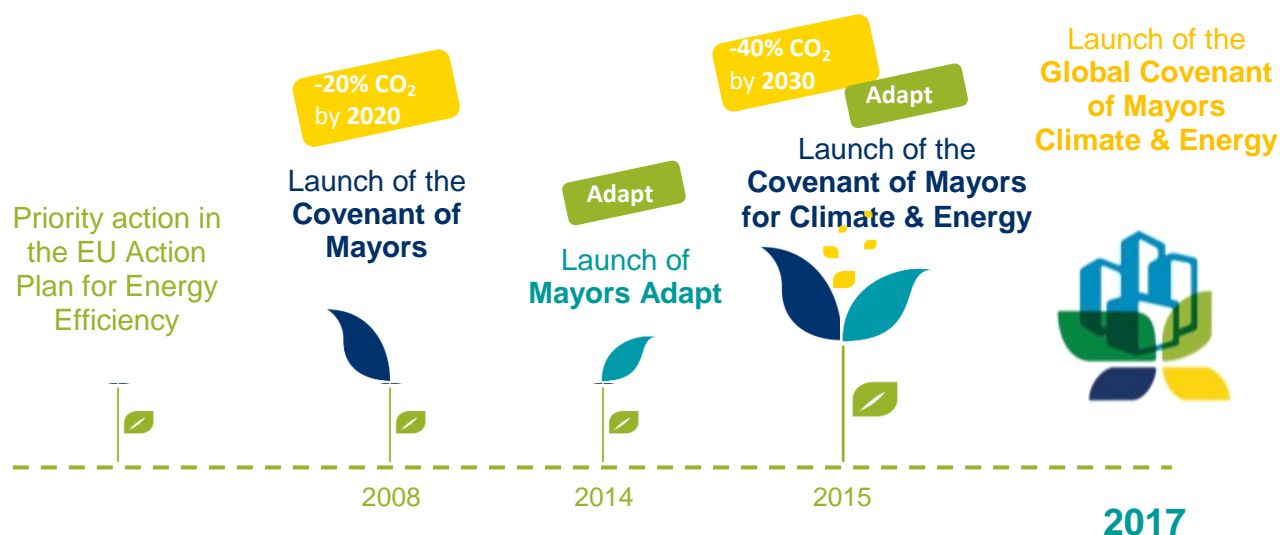


The Covenant of Mayors for Climate & Energy in Europe

- Key Figures -

The evolution of the Covenant of Mayors



The 3 pillars of the Covenant of Mayors in Europe

MITIGATION

Accelerating the decarbonisation of their territories

ADAPTATION

Strengthening their capacity to adapt to unavoidable climate change impact

ENERGY

Allowing their citizens to access secure, sustainable and affordable energy

'-40% by 2030' + 'more resilient cities' + 'address Energy Poverty'

The Covenant Community in Europe

9,200+ cities committed | **7,650+** signatory cities on track

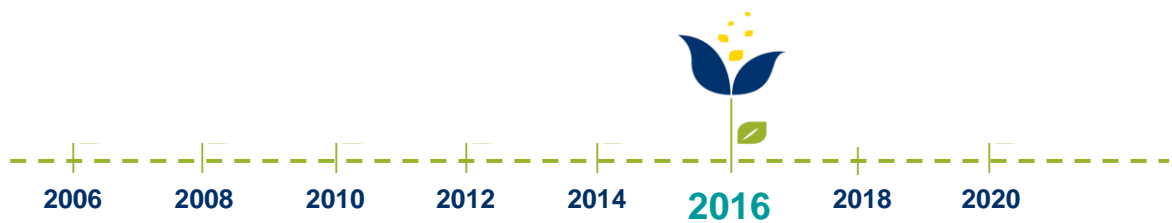
ca. 360 regions, provinces, associations,
local & regional energy agencies

35+ associated partners



5,900+ Action Plans
developed

Latest achievements



Average CO₂-emission reduction of **about 23%** by 2016

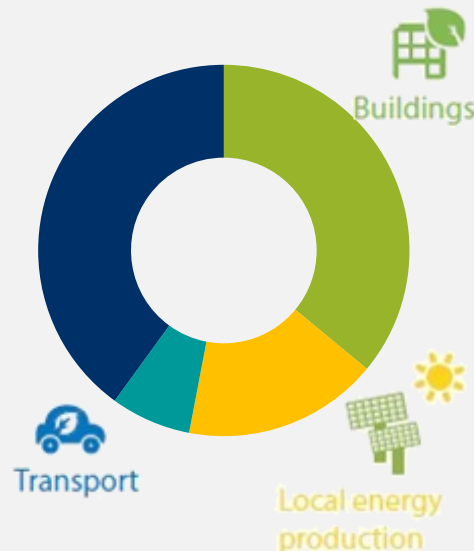
GHG emission reduction by 2016

36% Buildings

17% Local Energy production

7 % Transport

40% Other sustainable policies



18% reduction of final energy consumption – 89 TWh,



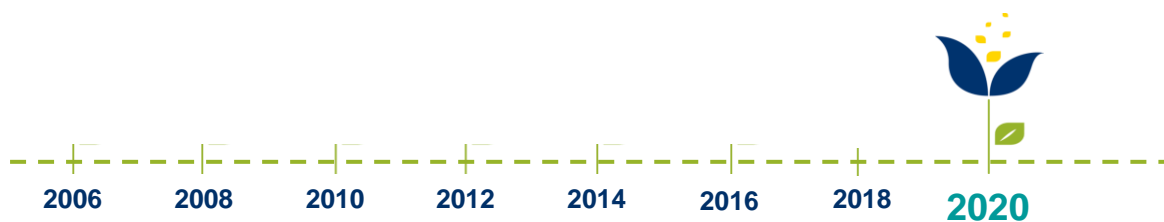
equivalent to the energy savings achieved by Germany between 2005 – 2016.

34.4 TWh in local energy production from renewables:

can cover annual electricity needs of 9,5 million
households in Europe (21 million citizens)

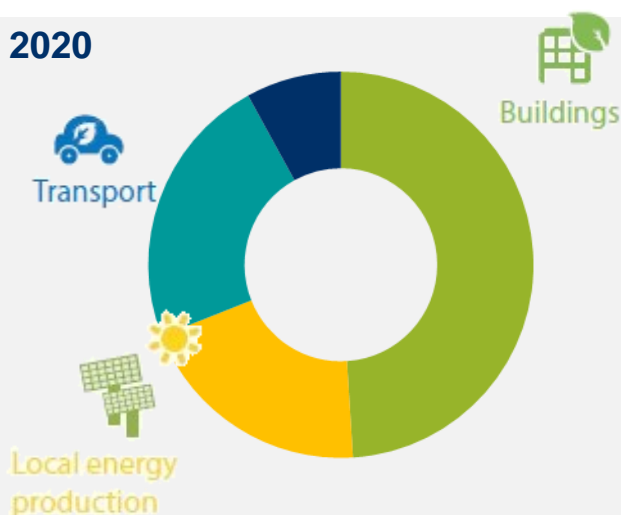


Expected achievements by Covenant signatories by 2020



GHG emission reduction envisaged by 2020

- 49% Buildings
- 20% Local Energy production
- 23 % Transport
- 8% Other sustainable policies



Average CO₂-emission reduction of about **27%** by 2020

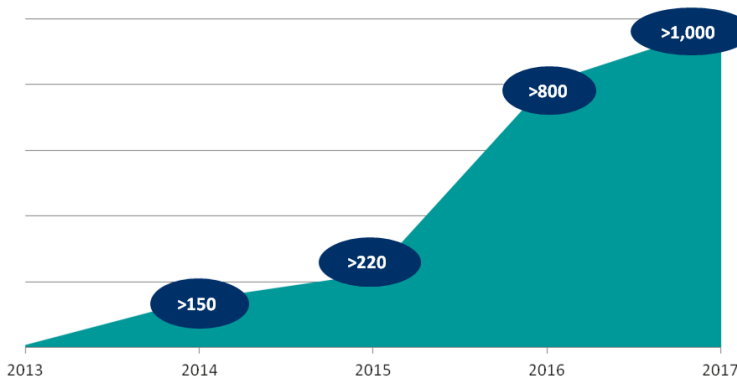
Share of EU GHG emission reduction target:

31% of the EU's GHG emission reduction target by 2020



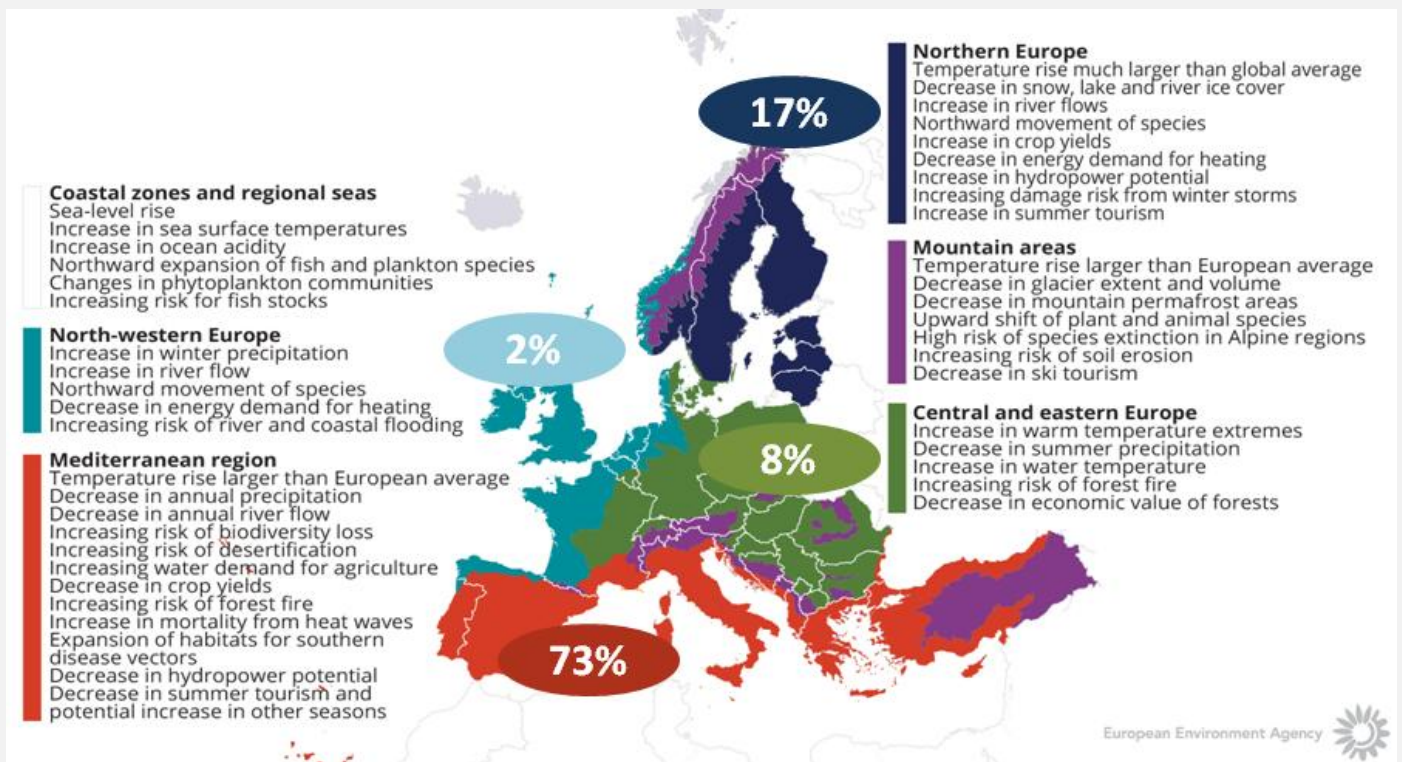
-20% energy consumed + **50%** increase in local energy production

Focus on the adaptation pillar



>1,000 signatory cities committed to adaptation, representing **58 million** inhab.

% of signatories committed to adaptation in the main European regions (Source: CoMO, 2017), **observed and projected climate change and impacts in these regions** (EEA, 2015)



Impacted Sectors

